



NACPRO NEWS

The Newsletter of the National Association of Park and Recreation Officials

Affiliated with: National Association of Counties (NACo) and National Recreation and Parks Association (NRPA)

NACPRO celebrates 2010 Parks Excellence Awards

2011 NACPRO Awards Program Announced

Nominations will be accepted beginning February 1, 2011 for the NACPRO County Parks Excellence 2011 Awards. Presentation of the awards will be made at an award banquet in conjunction with the National Association of Counties (NACo) meeting to be held mid - July 2011 in Portland Oregon. The annual event recognizes and honors excellence in county Park and Recreation endeavors throughout the nation.

“Receipt of a NACPRO award also is a significant achievement that can be celebrated locally to reinforce the outstanding works of park and recreation departments with policy makers and constituents” said Awards Chairman Mark Denny.

Full descriptions of the categories and how to make nominations are found on page 10 of this edition of NACPRO news.



2011 NACPRO membership drive begins

The new NACPRO membership year begins January 1. Previous members should be receiving renewal invoices in mid January.

Mailings will also be sent to county park administrators that have not previously been members.

Membership Chairman Randy Burkhardt encourages all contacted to

Every year NACPRO scours the country for county parks with outstanding people, programs or facilities to recognize by presenting NACPRO Parks Excellence Awards.



The new South County Regional Park earned Palm Beach County (FL) Park and Recreation Department a NACPRO Facilities Award for 2010.

The 2010 awards were announced at the annual NACPRO meeting and awards banquet in conjunction with the National Association of Counties meeting, held this past July in Reno, Nevada.

On pages 4-10 NACPRO News highlights 2010 Park Excellence Award winners. They will be excellent examples for potential 2011 applicants.

make a prompt response.

“Becoming or remaining a member, confers professional status within the ranks of county parks management,” said Randy.

Professional membership dues are still very reasonable (only \$80 to \$100 based on agency size) and have not increased in several years. They help defray the cost of NACPRO News, the NACPRO Awards Program and annual educational events.

Volume 22, Issue 1

**January 2011
Web Edition**

Upcoming NACPRO Meetings:

- Portland, OR**—
July 2011
- ♦ **Atlanta, GA**—
Nov. 2011
- ♦ **Pittsburgh, PA**—
July 2012
- ♦ **Anaheim, CA**—
Oct. 2012
- ♦ **Fort Worth, TX**—
July 2013
- ♦ **New Orleans, La**—
July 2014

Inside This Issue

President's Message	2
Five Star Grants	3
2009 NACPRO Awards Review	4-10
Unique construction process	11
County News Roundup	12, 13
People in County News	14
Our Corporate Partners	15

NACPRO NEWS

NACPRO News is the official newsletter of the National Association of County Parks and Recreation Officials and is produced by it's Executive Director, R. Dan Gooch.

NACPRO News is published quarterly—spring, summer, fall and winter. All issues are posted on NACPRO's website. The winter issue is also mailed to NACPRO members, NACo and NRPA park affiliates and to our sponsors. Hard copy circulation is approximately 700 copies. Web circulation exceeds 1000 viewers.

Advertising Rates:

Full Page.....	\$500
Half Page.....	\$300
1/4 Page.....	\$200
Business Cards.....	\$125
Inserts, per single sheet	\$250

NACPRO News will accept articles from professional members on current recreation, conservation and park related issues. Articles may include photos (preferably in JPG format) accompanied by a cover letter with the author's name address and telephone number. They may be mailed to:

NACPRO News
16w284 97th St.
Burr Ridge, IL 60527
or faxed to 630-920-0333
or e-mailed to rdangooch@aol.com

Officers

President.....Steve Madewell
President Elect.....John Buck
Vice President.....Mark Denny
Treasurer.....R. J. Cardin
NACo Representative..Andy Kimmel
NACo Liaison.....Carrie Clingan
NRPA Rep.....Mark Thornton

Letter from the NACPRO President

As 2010 closes we are all aware of the myriad of challenges facing park and recreation agencies and most of us are having sleepless nights and stressful days searching for answers on how to meet seemingly endless demands with ever shrinking resources.

I can tell you across the country individuals and agencies are responding in ever creative and inspirational ways.

NACPRO hosts two annual park tours, one in affiliation with the National Association of County Officials conference and the other in conjunction with the National Park and Recreation Association Congress.

On our summer NACo/NACPRO tour in Washoe County Nevada, participants saw the response of Doug Doolittle and his staff to continue to offer safe, clean and open parks across the county in spite of extreme budget reductions.

This was in sharp contrast to our NRPA/NACPRO fall tour in Minnesota where we saw the results of one of the largest state wide conservation funding initiatives in the county. An initiative that was passed by overwhelming support at the very beginning of our national economic crisis, illustrating the priority that the public places on conservation and park services.

Also at our annual banquet in Minnesota a brief presentation summarized agencies and individuals selected by the NACPRO awards committee for their incredible creative projects or their tireless efforts to advance park and recreation services. These projects and community leaders are truly representative of the best in the country.

When I return from these inspirational experiences I find that I am better motivated, more optimistic and generally better prepared to meet the day to day challenges I have at work.

I also have the practical benefits associated with networking with a collection of professionals from across the country from a diverse selection of park systems who have dealt with or are in many instances are dealing with many of the same issues I face.

This is one of the most powerful professional benefits that comes from being an active NACPRO member, in addition to belonging to an organization affiliated with NACo and NRPA.

As such NACPRO participates with and has influence on the legislative efforts of both organizations and it is increasingly important that county/regional parks are specifically represented in the legislative process.

We know that county and regional park systems provide an extremely wide selection of ecological and recreational services for a huge percentage of the country's population and we must do what we can to make sure that our services are recognized for the economic impacts that they have on the nation.

Consequently we are continuing work to influence a number of efforts to document and quantify the totality of our service, the public value and economic impacts that they have.

Individually it is easy to be overwhelmed in the face of adversity and challenge, collectively we can and will help each other be successful in these difficult times.

Thank you for your on-going support of NACPRO



Steve Madewell

NACPRO President for 2010-2011

Director Lake MetroParks, Ohio

Announcements and Events

Park executive development offered

Indiana University's Executive Development Program is being offered April 10-13th at Indiana University. A motivational speaker and seven other instructors from around the country will facilitate sessions related to risk management, how to respond to conflict, employee selection and interviewing, succession planning, social media, leadership and developing meaningful partnerships. The program is structured with 17.5 hours of instruction (2.0 CEUs). Participants will have the opportunity to experience tours of Bloomington Parks and Recreation facilities, Brown County State Park, IU Athletic facilities, as well as a canoe excursion on Griffy Lake, and a fitness walk through campus.

The program is organized around a two year curriculum and class size is limited to 40 students. For professionals with restricted training

budgets, the university program offers several scholarships. Interested professionals may visit the website (www.iuedp.org) for more information about the 2011 program and to register.

Website promotes health in parks

There has been much talk in recent years about the relationship between the use of parks and personal health. A new website has been set up by Parks Victoria of Australia that may act as a clearinghouse for some of the more academic as well as practical information linking the two.

Dubbed Healthy Parks Healthy People (hphpcentral.com), this new website aims to provide a central hub for Healthy Parks Healthy People (HPHP) globally. It is where individuals and organizations can find news, profiles and research on the latest programs, innovations and discoveries on the connections between human health and nature.

County & special districts explore common ground

Many NACPRO members are affiliated with special districts that are often county wide. Except for funding and governance, special districts work pretty much like county park systems. This year NACPRO has been exploring the benefits of both groups working together on common goals.

In November a coalition of five special districts sent a letter to President Obama to comment on the America's Great Outdoors Initiative and stress support for [county and] regional parks.

The annual Special Districts Forum has been held for over 30 years. Organized by a loose coalition, it provides several days for professional managers to review one park system and discuss common concerns. The 2011 Forum will be held Sept. 25-28 at the Northern Virginia Regional Park Authority

New round of Five Star applications begins

By Carrie Clingan
NACo Senior Associate

Applications are now available for the 2011 round of Five Star Restoration grants. NACo, in partnership with the National Fish and Wildlife Foundation, EPA, the Wildlife Habitat Council, Southern Company, Pacific Gas and Electric, and FedEx, has made these grants available through the Five Star partnership.

The Five Star Restoration Program provides modest financial assistance on a competitive basis to support community-based wetland, riparian and coastal habitat restoration projects in communities. These projects build diverse partnerships to foster local natural resource stewardship through education, outreach and training activities. Grant awards range from \$10,000 to \$40,000, with an average grant amount of \$25,000.



*Photo courtesy of Elachee Nature
Science Center*

This year additional funds will be available for Five Star projects in seven metropolitan areas including: Boston, Mass.; Dallas-Fort Worth, Texas; Los Angeles and San Francisco, Calif.; Memphis, Tenn.; Pittsburgh, Pa.; Indianapolis, Ind.; Newark, N.J.; Chicago, Ill.; Washington, D.C. and Seattle, Wash. Though

these are listed by city, funds are also applicable for county projects serving these metropolitan areas.

Five Star projects show measurable benefits to the community including ecological, educational and economic benefits. They must include on-the-ground wetland, riparian, in-stream or coastal habitat restoration. Projects must also integrate meaningful education into the restoration project either through community outreach, participation or integration with K-12 environmental curricula.

To apply for a Five Star grant, visit www.nfwf.org/fivestar. This site also has information about the grants, past projects and partnerships. Applications open Dec. 16 and close Feb. 14, 2011. If you have additional questions, please contact Carrie Clingan at cclingan@naco.org or at 202.942.4246.

2010 NACPRO Excellence in Parks Awards

The NACPRO awards program is intended to recognize and honor excellence in county park and recreation endeavors throughout the nation and to share best practice ideas with other agencies. NACPRO hopes its awards program will encourage dreamers and dreams.

NACPRO recognizes member agencies for successful park and recreation facilities, programs, environmental/conservation initiatives, historical/cultural projects, and removing barrier initiatives.

NACPRO encourages interested readers to learn more about these projects by contacting the winning agencies.

The winners of the 2010 NACPRO County Parks excellence awards are listed and described below.

Outstanding Public Official

The Outstanding Public Official Award is presented to a nominated, elected or appointed federal, state, or local official (including commissioner or board member) who has contributed significantly to the benefit of county level parks, recreation, leisure services and open space programs.

This year's award recognized two individuals.

The first Outstanding Public Official for 2010 is Mr. Larry Blackstad, nominated by the Three Rivers Park District in Minnesota.

Mr. Blackstad has served on the Board of the nationally renowned Three Rivers Park District, in Minnesota, since 2004. He has been Chair of the board for the past 4 years. Mr. Blackstad has demonstrated a long-term dedication to the environment as a member of the Mississippi River Coordinating Commission, NRPA Public Policy Committee, Great Lakes Regional Section of NRPA, the National Asso-



ciation of County Community Development, the City of Minnetonka Park and Recreation Board, and a local watershed district advisory committee.

Mr. Blackstad's significant contributions to county parks and recreation have focused on consensus building and community partnerships. Under his leadership, three signature facilities opened in 2009: the Dakota Rail Regional Trail, Luce Line Regional Trail, and Siverwood Park – a center for arts and the environment. For each project, he established consensus by working across county and municipal boundaries, achieving considerable public support.

A second Outstanding Public Official Award went to Stan Lee, nominated by the County of Los Angeles Department of Parks and Recreation.



Mr. Lee has worked side-by-side with L.A. County Supervisors to support the Aquatics Section of the South Agency where he serves as the Executive Director of the Aquatics Foundation of Metropolitan Los Angeles. In that capacity, Mr. Lee generated more than \$150,000 of funding and publicity for programs and maintenance of pool facilities. Due to his efforts, a new Aquatics Training Center will be opened this year at Ted Watkins

Park to assist youth interested in careers in the Aquatic field.

Mr. Lee also leads the efforts of the Los Angeles County Parks foundation, the non-profit fundraising group for the Parks and Recreation Department. His efforts with the Foundation have generated enough funding to afford uniforms and travel for kids attending sports competitions. He always keeps in mind the needs of the parks community and looks for ways to enhance parks for the public's use.

Fellow Award

The NACPRO Fellow Award recognizes exemplary professionals who are currently employed in county park and recreation service. Each year, just one individual is selected to receive this award.

The 2010 Fellow Award Winner is Bill Palmer, Superintendent of the Recreation and Park Commission for the Parish of East Baton Rouge, Louisiana.



Bill, has been a member of NACPRO for many years. He has worked with NACPRO in several board capacities. He has served on the Board of Directors, edited the newsletter, and served as the Vice-President and President. His career includes work as a parks planner for over 30 years.

Bill received his Bachelor of Landscape Architecture from LSU in 1971 and is a licensed landscape architect. His professional experience includes serving as senior landscape architect, and then Superintendent of Planning for the Forth Worth Park and Recreation

.....More 2010 Awards

Department. Bill returned to Baton Rouge in 1979 to become the Director of Planning and Engineering at BREC. Prior to his appointment as Superintendent, he served as both Assistant Superintendent and Deputy Superintendent. Bill has led the way in implementing the county strategic plan, "Imagine Your Parks."

BREC staff, reports that Bill is a dedicated public servant who works to make his county parks system cleaner, better, and safer every day. With his work already appreciated on many levels, NACPRO was proud to honor him with the Fellow Award.

Outstanding Contributor

Outstanding Contributor Award went to Sue Turner, nominated by Recreation and Parks Commission for the Parish of East Baton Rouge.

East Baton Rouge Parish would be a different place if not for Sue Turner. Sue has been a parks community activist for decades. Her association with a cause conveys a sense of stability and trust to the general public. Sue makes a difference in her community through her support and work on behalf of many different groups. Sue's longtime association with BREC has provided a sense of community.

One example of her leadership speaks for many others; targeted by land developers, Magnolia Mound Plantation's Historic House was to be destroyed to make way for high-rise condominiums. Realizing this unique property was in peril, Sue and other concerned citizens ag-

gressively petitioned the local and state government to save the property. It was to the great relief of those involved that in 1966, Magnolia Mound was saved. BREC took responsibility of the site and in 1975 Magnolia Mound Plantation was opened to the public as a public park.

Recently, Sue has donated \$425,000 to the BREC Foundation in order to build a new welcome center at Magnolia Mound.

Sue was one of the original incorporators of the BREC Foundation and has served on the Board of Directors since its establishment. She pinpoints aspects that need amplification and brings up historical precedents of which many people are unaware. Sue has worked with many organizations which span the parish, the state of Louisiana, and the nation. Sue Turner's activism has melded together the tapestry of the past as well as the hope and progress of the future. She has truly made her community a better place.

Outstanding Volunteer

The 2010 Outstanding Volunteer award was presented to an individual who made a significant contribution of personal time and talent to county parks and recreation.

The Outstanding Volunteer Award was presented to Kim Rhoads of Los Angeles County Department of Parks and Recreation, California.

For 12 years, Kim Rhoads has volunteered thousands of hours at Los Angeles County's Castaic Sports Complex in Castaic, California. Al-

though knowing nothing about the game, she helped launch Division I Soccer and became one of its first coaches.

She devotes more than a hundred hours annually to the park's special events and on the three annual "picture days," she organizes and entertains 500 children from the sports leagues waiting to have their pictures taken.

Kim has worked tirelessly to build a great day camp, providing organizational and promotional skills and innovative thinking.

Kim was recognized with a 2007 L.A. County "Urban Hero" Award, the 2007 L.A. County "Volunteer of the Year" Award, and the California Parks and Recreation Society's 2008 "Champion of the Community" Award.

What distinguishes Kim from other dedicated volunteers is that she has a terminal illness- a diagnosis that has barely slowed her. Her courage, selflessness and enthusiasm have brought the community closer together and taught everyone important lessons on how life should be lived.

Outstanding Support

The Outstanding Support award is presented to an organization that has made a major contribution to benefit park and recreation programs or facilities. The contribution may be in terms of facility or program development, operation or support.

The 2010 Outstanding Support Organization Award went to the Eaton Canyon Nature Center Association and the Los Angeles County Department of Parks and Recreation.

Easton Canyon Nature Center Associates (ECNCA) is a non-profit group founded to develop in children and adults an appreciation of the natu-



..More 2010 NACPRO Excellence Awards

ral world and to preserve Eaton Canyon as a natural area for future generations. For over forty years, ECNCA has supported the County of Los Angeles Eaton Canyon Natural Area and Nature Center by helping to provide quality programs for the public. Families rely on Eaton Canyon for its low cost or free programming.

Currently, ECNCA funds and staffs nearly all Park programs including guided hikes, birding, plant and moonlight walks, school tours, field trips, nature camps, after-school Jr. Ranger Programs, Student Naturalist and special events. During 2008-2009, 2,400 students benefited from hands-on experience that most schools can't afford.

With ECNCA's support, Eaton Canyon Natural Area Park and Nature Center has provided quality programs that engage the public in great outdoor experiences even during economic downturn and difficult times.



Park and Recreation Program

The Park and Recreation Program Awards recognize county park and recreation agencies for unique or exceptional programs, activities, or events which provide an out-

standing example for other agencies. The Class II Parks and Recreation Program award is presented to park and recreation agencies from counties with a population over 500,000.

The first Class II Program Award was given to The Desert Critter Scene Investigator program, developed by the Maricopa County Parks and Recreation Department and Phoenix Zoo.



This program focuses on reconnecting youth with nature by having them examine objects and clues left behind by Sonoran desert animals. Children who have this knowledge will be better prepared for what they may find on hikes and walks in the desert.

While the training won't alleviate an impulsive nature, it can help focus a child's attention and keep them alert to possible danger. It can also give their treks purpose instead of aimless wandering which can lead to trouble.

Unveiled at Cave Creek Regional Park in 2008, the agency has offered two programs attended by several hundred participants. The programs unique hands-on interaction between wildlife and the Sonoran desert have peaked curiosity among youth to learn more about nature and have prompted repeat visits to the parks. This is a great program

could easily be adapted to accommodate other types of climates.

The second Class II program award went to the Oakland County Parks and Recreation Department in Michigan.

Tuning Your Tot or (TYT) is a quarterly program offered by Oakland County Parks at the Wint Nature Center of Independence Oaks County Park in Clarkston, Michigan.

TYT's objective is to build a foundation of environmental awareness in children by providing opportunities to explore the wonders of science and the natural world. In each season, TYT presents a new theme or focus to engage and teach children about the natural world.

TYT was developed when the nature center opened 25 years ago. The fundamentals of child development are interpreted and transferred to the science/nature topic that is the focus of each session. Although TYT emphasizes music as a tool to involve the pre-school child in "active" learning, the program offers indoor and outdoor activities that engage all five of the children's senses.



Over the past 25 years, there have been 353 TYT sessions. As a result, 5,295 "learning experiences" have taken place by children and 4,236 by adults. Additionally, many adults who attended the program as youths now bring their own children to have the same experience.

.....Even More 2010 Awards

Areas and Facilities

The Areas and Facilities awards are presented to recognize and honor excellence in recreation and park facilities; to focus national attention (both public and professional) on the very best of facility design; to encourage outstanding efforts in planning, design, construction, and benefits to the community; and to be a resource of information for the highest quality of facility development.

The Class I Park and Recreation Facility Award went to the Recreation and Park Commission for the Parish of East Baton Rouge. Class I Counties have a population of less than 500,000.



Flanacher Road Park is the most recent neighborhood park and regional sports park completed by BREC. This previously undeveloped park is a 175-acre site featuring pristine wooded areas and vast open spaces containing stands of large mature specimen oak trees and other hardwoods.

A public meeting in June, 2006 to gather suggestions from citizens on the Conceptual Master Plan for the park. The final plan produced by BREC included the development of a new 2600 square foot Recreation Center, soccer complex, disc golf course, fishing pond, extensive walking paths, playground, picnic areas and picnic shelters. Work was completed in April of 2008. Construction costs for Flanacher Road Park Phase One totaled

roughly \$3.2 million. Funding for the development of the park was made possible by the "Imagine Your Parks" tax passed by voters of East Baton Rouge Parish in November 2004.

Amenities along the trail include a campground, golf course, baseball and softball facilities, multiple shelters, gardens, marina, arboretum, playgrounds, tennis courts, fishing docks, and restrooms. As it meanders through the rolling terrain of Lake Shawnee Park, the trail provides trail users with multiple recreational opportunities as well as wonderful scenic views.

The Class II Award for Parks and Recreation Areas and Facilities is presented to counties with a population over 500,000.

The first Park and Recreation Facility Class II Award was presented to the San Diego County Parks and Recreation Department for the San Elijo Lagoon Nature Center.

The new San Elijo Lagoon Nature Center is nestled on the banks of the 1,000 acre San Elijo Lagoon Ecological Reserve in the community of Encinitas, California. Development of the Nature Center required a County led partnership between several governmental agencies, including the City of Encinitas, California Coastal Commission, California Department of Fish and Game, San Elijo Joint Powers Authority, and the non-profit San Elijo Lagoon conservancy.

The County used State and Federal grants to design and build this \$5.6 million dollar facility. Uses include a large exhibit room, ranger offices, restrooms, a classroom and an outdoor balcony. The building is designed to demonstrate the effectiveness of a variety of green technologies. These include, photovoltaic panels, low emissivity windows, renewable bamboo, recycled content

concrete, planted green roof, radiant floor heating and solar tubes for natural lighting.



In addition to the building's technological features, it has many interactive exhibits dedicated to educating the public on the history and importance of the Reserve, its ecosystems, and sustainable building design and operation. As a result of all these efforts, the San Elijo Lagoon Nature Center recently attained LEED Platinum certification from the US Green Building Council, the highest level of recognition for sustainability and energy efficiency in the Nation.

The second Class II facility award was earned by Palm Beach County, Florida for the South County Regional Park development.

South County Park got its start during South Florida's population explosion 35 years ago when 816 acres of land were acquired by Palm Beach County. The new park was slated to be the primary provider of recreation services for the vast, growing region.

The recommendations of a citizen's advisory committee led to the initial conceptual master plan for the park. A portion of the first phase opened in 1994 with much needed ball fields, picnic facilities, restrooms, and parking. Phase I was completed two years later with the

..More 2010 NACPRO Excellence Awards

addition of a new nature center, athletic fields, basketball and volleyball courts, a racquet center, bike paths, and picnic facilities. A second phase featured affordable, family-friendly Coconut Cove Waterpark and Recreation Center with waterslides, a water playground, lazy river, concession, classrooms, and party rooms.



Despite challenges along the way, all agree that this remarkable regional park has been well worth the wait. As the finishing touches are made to Osprey Point, a new 27-hole golf course enrolled in the Audubon International Classic Signature Golf Course program, this extraordinary regional park begun in 1975 is a tribute to all who helped make it a reality.



Environmental/Conservation

The Environmental/Conservation Award is presented each year to recognize an exceptional effort to reclaim, restore, preserve, acquire, or develop unique and natural areas and programs.

This year's first Environmental/Conservation Award went to Orange County, California for the Second

Sundays Habitat Restoration Program.

Second Sundays are three-hour events that take place on the second Sunday of Each month and host more than 100 volunteers, resulting in thousands of volunteers annually who work tirelessly to improve habitat for wildlife. The goals of the program are to increase habitat values on degraded portions of the Upper Newport Bay Nature Preserve by planting and seeding with native species and removing invasive, non-native plants.



This program has leveraged the efforts of three Orange County staff members into more than 3,600 hours of volunteer restoration maintenance annually. The results represent a massive savings for Orange County. Second Sunday's restoration sites have grown to cover 5 acres, with more than 6,000 plants installed and countless pounds of non-native species removed.

Prior to the conservation of Newport Bay as designated open space, the lands were subject to grazing, grading, a salt works, mining and other activities that degraded the land in many areas. Reclaiming these beautiful coastal lands is vital to support native plant and animal species dependent on the habitat and protection provided by UNBNP in the midst of an urban setting.

The second 2010 Environmental/

Conservation Award was received by Palm Beach County Parks and Recreation Department for the Riverbend Park Project.



Riverbend Park represents the culmination of a successful 32 year restoration and preservation effort of 684 acres of historically and environmentally significant land in this densely populated region of South Florida. This formidable undertaking required unique partnerships of local, State and Federal agencies, and coordination of resources, and successfully achieving consensus among diverse public user groups passionate about their respective interests regarding the development, access, and protection of the property.



With its restored waterways, native re-vegetation, and the many species of native wildlife that now make Riverbend its home, the park serves as the only surviving example of a subtropical cypress forest river system remaining in Florida. Riverbend has become the connecting hub of larger trail systems, such as the Florida Trail, the Northeast Everglades

..... Even More Awards

Natural Area, and Ocean-to-Lake (Okeechobee) Trail.



Riverbend is now recognized as a significant cultural and historical resource for the community. Special events and demonstrations provide a unique living history experience in the authentically-constructed Seminole Village and Pioneer homestead. This gem in Palm Beach County's park system has clearly become an exceptional and popular destination for many seeking a picturesque getaway and a taste of Old Florida.

Historical/Cultural

The Historical/Cultural Facility Award is awarded to a unique facility development dedicated to historical or cultural preservation, recreation, and/or interpretation. This year, NACPRO made two awards in this category.

The first 2010 Historical/Cultural Facility Award was presented to Oakland County Parks, Michigan, for The Historic Buhl Estate. In 1969, Oakland County acquired



the Tudor Hills Gun Club and Game Preserve and opened Addison Oaks County Park to the public for day use and camping. The site originally dates to 1833 when a man named Dennis Snyder built a log cabin and cleared 12 acres for crops.



Included in the park today is the original 320 acre farm. A later owner, the Buhl family, established a family estate and constructed a large Tudor home on the site in 1927. The estate included a pool and bathhouse, horse stables, barns, servants quarters, tennis courts, and a historic milk house.

Today, the site features the historic Buhl home which is now used as a Conference Center, hosting events for up to 500 people. An outdoor garden is perfect place for on-site weddings. Addison Oaks County Park is a model of how other park systems can restore and use a historic estate as a modern park.

The second 2010 Historical/Cultural Facility Award was presented to Orange County, California for the Clark Interpretive Center. The center features a "fishbowl" laboratory that allows volunteers to work on curation and preservation of fossil specimens so that their work is viewable by the public touring the museum. Museum staff members supervise college students from Fullerton College, California



State University Fullerton, as well as other local colleges and universities on volunteer and research projects.

This Facility is an amazing resource for local educators to teach students about prehistoric species and scientific methods. The interpretive center offers a two hour program called "Fun with Fossils" for school-aged children throughout the academic year. In 2009, the center drew more than 5,000 students for this program. The center has provided an important asset to the community and is in following with Orange County Parks' mission of remaining a steward of natural resources and the education of Orange County's Citizens.

Removing Barriers

The Removing Barriers Initiative is presented to an agency with a unique program or facility that enables and encourages greater participation in parks and recreation by persons with disabilities. This year, there were two awards.

The next special award is the Removing Barriers Initiative. It is presented to an agency with a unique program or facility that enables and encourages greater participation in parks and recreation by person with disabilities.

This year's Removing Barriers Award is presented to Kent County, Michigan for the Townsend Park Open Shelter ADA Improvement Project. Built in 1926, the open

..More 2109 NACPRO Excellence Awards

shelter at Townsend Park is Kent County Parks Department's oldest structure. For more than 80 years, the open shelter has been a favorite site for picnics, family gatherings and weddings. Constructed of field stones and timber on a hilly terrain, the shelter rises above the park.

Previously, the cobblestone approach and a demanding set of concrete steps excluded many from using the popular facility.

Built in the days when universal access wasn't a consideration the shelter was not designed to address modern expectations for accessibility. Kent County Parks considered several options to provide access and still respect the historical character of the structure. The boldest option, to bury the steps and create a plaza in the front of the shelter, was chosen. An accessible walkway connecting the side of the plaza to new parking provides easy access along with new set of steps and railing that are much more user-friendly.



The Department received a 50% matching grant for improvements totaling \$40,000 through MRPA's Access to Recreation Program. The project included construction of an accessible walkway, parking, plaza, new steps, a boulder wall and landscaping. The surrounding area was seeded using a wild flower mix. The transformation of the open shelter has been a huge success, allowing the historic parks icon to meet the needs of today and tomorrow.

Planning Initiative

The Planning Initiative Award is presented to recognize an agency that conducts a research or planning initiative that has provided the agency with important data to aid in decision-making and which contributes to a body of knowledge that will be valuable to other county agencies.

This year's Planning Initiative Award was given to the Recreation and Park Commission for the Parish of East Baton Rouge, Louisiana for their Capital Area Pathways Project or CAPP.

Through a series of public polling's, BREC learned that Trails were the number one public request. They prioritized their development within their strategic plan, "Imagine Your Parks." The CAPP project is an initiative to identify routes and build a network of trails and greenways throughout East Baton Rouge and surrounding Parishes.

Award Program Sponsors

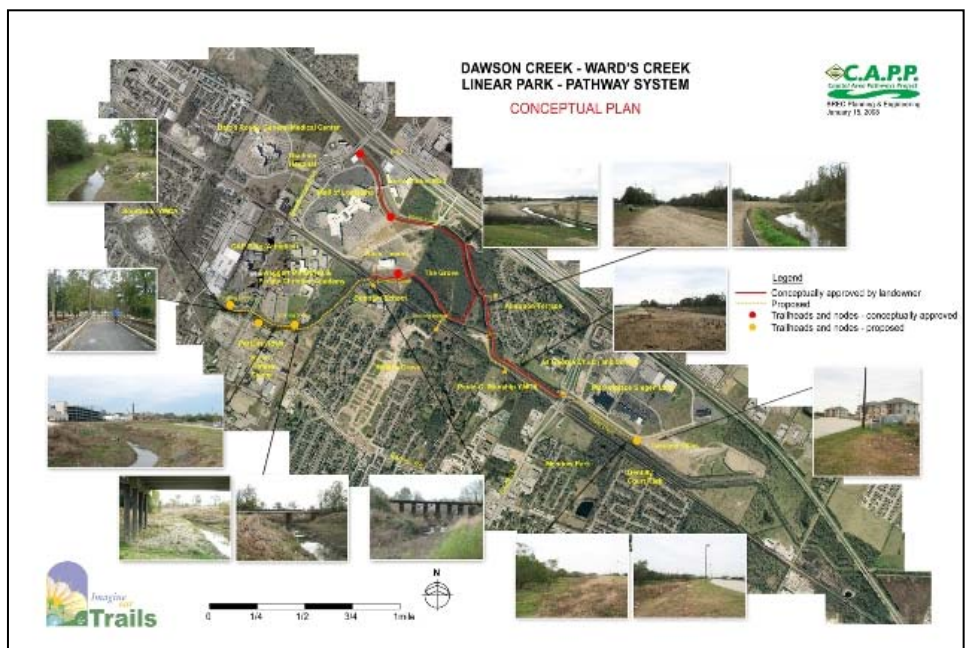
NACPRO thanks this year's award program sponsors, including:

Biological Mediation Systems, Inc. (BMS), providing the Parks and Recreation profession with systems and buildings to meet outdoor restroom needs; and **Pilot Rock**, providing landscaping equipment products wherever people gather to enjoy the outdoors; and **TrafficGuard**, specializing in the manufacture of top-of-the-line manually operated removable and collapsible vehicle access control systems; And **Sybertech Waste Reduction Ltd**, committed to providing cost saving services and products that help keep the environment cleaner and the work place safer.

To Enter the 2011 Awards Competition:

Nominations will be accepted beginning February 1, 2011 for the NACPRO County Parks Excellence 2011 Awards. Presentation of the awards will be made at an award banquet in conjunction with the NACo meeting to be held mid - July 2011 in Portland, Oregon.

For details and application forms check the NACPRO website <http://www.nacpro.org/> in February.



Trails video earns state parks & rec. award

Oakland County, MI—Oakland County Parks and Recreation has won the 2010 Best Video award from the Michigan Recreation and Park Association. The honor will be presented in February at MRPA’s annual conference.

The video features the helical pier process used by parks staff to construct boardwalks within wetlands on OCPD property, featuring the Ted Gray and Spring Lake boardwalks at Independence Oaks County Park near Clarkston.

The video offers insight into the unique construction process, the importance of the habitat the boardwalk traverses and accessibility to natural resources for all park guests, according to Executive Officer Dan Stencil. The mini-documentary was a partnership with Fox Sports Detroit.

To date, OCPD staff has constructed more than 1,800 linear feet of boardwalk using the helical pier method. The boardwalks featured in the video were approximately 570 linear feet in length.

“We wanted to create a method that would limit contact, both by people and equipment, within the wetlands. Using the helical pier method, the boardwalk was constructed one section at a time. The heavy equipment rests on a finished section then reaches out to install the piers for the next section of boardwalk,” Mike Donnellon, chief of facilities and maintenance, said.

The piers that support and stabilize the boardwalk are solid steel with a helix on the bottom. Each was screwed into the wetland at varied lengths of five-80 feet deep until proper bearing capacity was reached.

Using in-house staff to build the boardwalk saved the parks system



more than \$23,000 on the one project alone, Donnellon said.

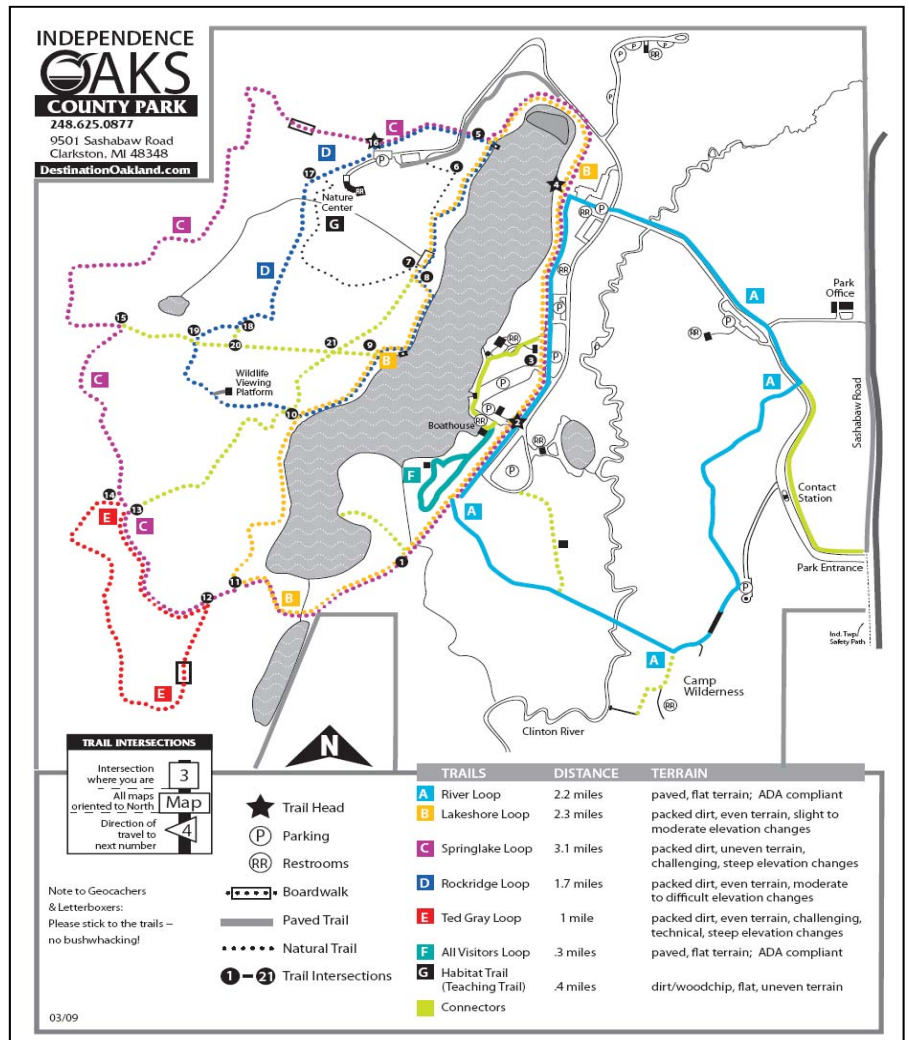
Parks staff will again use the helical pier method to build a boardwalk at Independence Oaks County Park – North in 2011.

“In the next few weeks we’ll start

construction on a boardwalk leading to a fishing pier,” Donnellon said. “The Michigan Department of Natural Resources and Environment typically does not allow construction in wetlands from April - July. However, due to our low-impact construction method, Oakland County Parks and Recreation is able to construct boardwalks year-round. And, MRPA has recognized the process as innovative and environmentally sensitive.”

To view the video, go to <http://www.youtube.com/destinationoakland#p/u/13/-fuzugxWzEU>

For more information about Oakland County Parks and Recreation, visit DestinationOakland.com.



COUNTY PARK NEWS ROUNDUP

BREC park re-imagined

East Baton Rouge Parish, LA—The Recreation and Park Commission for the Parish of East Baton Rouge celebrated a grand re-opening of its Perkins Road Community Park, in October. BREC's Planning and Engineering Department completed the Perkins Road Community Park Master Plan in 2006 after an extensive public input process. The 52-acre park features: a state of the art skate park, BMX track, velodrome cycling stadium, rock climbing facility, community playground, one-acre lake, four picnic shelters, two resurfaced tennis courts, a sand volleyball court, as well as walking, skating and biking trails.



BREC worked with several companies to complete this project. SITE Design Group, Inc., a California-based firm that specializes in extreme sport facilities, designed the park's skate and BMX areas. Joseph Furr Design Studio, Inc. designed the Extreme Park Plaza. Daniel T. Calongne & Associates served as the electrical engineers, Professional Engineering Consultants Corporation served as the civil engineers and Charles Carter Construction served as the construction team.

Construction costs for the park totaled \$5.1 million. The Imagine Your Parks Plan, passed by EBRP voters in 2004, made these renovations possible. The IYP funds are dedicated to the refurbishment of neighborhood parks, the development of 12 community-level parks,

renovations to special facilities, walking trails, and maintenance.

Stephen and Claire Wilson donated funds for the park's climbing boulder in honor of their son Van Wilson.

New library and nature center introduce desert surroundings

Maricopa County, AZ—A new library and nature center has been completed just inside the gates of the 30,000-acre White Tank Mountain Regional Park. The 29,000 sq. ft. building acts as the welcome center for the regional park and a location to obtain free library books.

The facility provides library amenities including DVDs, study rooms, classrooms, and the Internet while nature center amenities include live animal exhibits, spectacular mountain views. The combination provides an introduction to the surrounding Sonoran desert preserve. Once outside visitors may encounter Saguaro Cactus, coyotes, woodpeckers, great horned owls and perhaps even rattlesnakes

The operation represents a partnership between the Maricopa County Parks and Recreation Department and Library District.



The building's environmental highlights include:

- Rooftop solar collectors that produce twenty-seven percent of the facility's annual energy needs
- Net-zero pollution rating as a re-

sult of balance of energy needs provided through purchases of renewable energy certificates

- Light sensors that modulate based on facility occupancy and outdoor brightness levels
- Deep overhangs, fin walls and interior shades to reduce glare
- Low-flow plumbing fixtures
- On-site water treatment
- Indigenous desert landscaping

The county is currently seeking a Platinum Leadership in Energy and Environmental Design (LEED) Certification for the building and outdoor amphitheater.

\$1.27-million grant to Genesee parks

Genesee County, MI – Facing a major funding shortfall, the Genesee County Parks & Recreation Commission has gotten some critical help from a \$1.27-million grant from the Charles Stewart Mott Foundation.



The grant, which coincided with the October 1 beginning of the county's new fiscal year, will help keep the parks system – by some measures the largest in Michigan – both strong and ready to welcome a growing number of visitors.

The park system is funded through a county property tax millage, which was renewed by voters in 2006 and expires in 2016. Falling property tax revenues – the result of declining land values in the area – is behind the expected budget shortfall.

Roughly 500,000 persons visit the system's 21 parks each year, which offer more than 600 recreational and educational opportunities, many without charge. These include

.....More County Park News

playgrounds and picnic areas; a historic village and authentic narrow-gauge railroad; an arboretum and nature preserve; bicycle motorcross and off-road vehicle tracks; hiking and equestrian trails; boat and canoe launches; swimming and water parks; and camping facilities.



Genesee's Clover Beach Pavilion is on of the facilities the grant will help to operate.

The Commission, in a move to strengthen both its effectiveness and efficiency, has been working to streamline its business operations, reduce costs and diversify funding sources. Park staff in 2009 helped save nearly \$167,000 in reduced fuel, office supply, utility and other expenses.

The Charles Stewart Mott Foundation, established in 1926 in Flint, Michigan, by an automotive pioneer, is a private philanthropy committed to supporting projects that promote a just, equitable and sustainable society. It supports non-profit programs throughout the U.S. Mott grant making related to the county parks has totaled nearly \$17 million since 1965.

Comptroller issues report on county parks' housing

Erie County, NY—Erie County Comptroller Mark C. Poloncarz recently issued a report regarding the Erie County Department of Parks, Recreation and Forestry's initiative to renovate and then rent houses in nine County parks.

The report, which was prompted by

a whistleblower tip to the Comptroller's Office in October 2010, cites a number of troubling control and accountability issues. They include:

- Parks appears to have renovated and then rented County owned houses to certain individuals, including political appointees and County employees in Parks without public awareness or any "real" promotion of the initiative.
- It appears the Director of Real Estate Asset Management was unaware of the initiative to rent county-owned properties until the matter was made public in October.
- Parks stated they communicated the availability of renovated Parks' rental housing by "word of mouth."
- Parks extensively renovated the houses at taxpayer expense using bonded and General Fund monies without informing the County Legislature that such work was being conducted.
- No written lease agreements exist between Parks and the tenants of the properties.
- Tenants may not be paying for utilities at Parks' houses, a condition which has been long required under an existing County protocol.
- Tenants have not been required to provide security deposits. Security deposits are a standard business practice.
- The Collins Administration violated the Erie County Charter by setting rental amounts for Parks' housing without first seeking and receiving required approval from the Erie County Legislature. The Administration still has not sought Legislature approval of the rental fees even though the Parks Commissioner acknowledged the failure to do so over a month ago.
- Parks did not develop any new procedures or protocols for the rental of Parks housing in contravention of the existing protocol stated in the County's CSEA white collar bargaining unit collective bargaining agreement.
- Parks has allowed tenants to not pay their full monthly rent as required.

Small county makes big news

Clark County, OH—Despite financial woes across the country levies for creating supporting and even operating county park systems have generally been favorable. So it was big news when in November a small property tax levy for parks operations failed. The levy would have only cost the owner of \$100,000 home \$5 a year. According to the Clark County Board of Elections the measure was rejected 23,855 to 20,328.



Within a few days the Clark County Park District put up barricades closing its four parks

and bike trails. However the district's Little Miami Scenic Trail and George Rogers Clark Park were developed with state and federal grants that stipulate the parks must stay open to the public indefinitely. The Ohio Department of Resource is working with the district on a solution. Budgeted expenses for the district for 2011 total \$400,000. The board expects to bring in \$65,000.

Agreement to acquire park site

King County, WA—Funds from a state settlement, county, and private contributions would back \$36 million purchase of longest remaining natural shoreline in King County.

The recent announcement is the result of an historic, decade-long effort by leaders from across the region.

Acquisition of the Maury Island site would protect 250 acres of forests and a mile of marine shoreline with nearshore habitat for listed chinook salmon.

King County Parks would manage the 250-acre site as protected open space and for passive recreation.

People In Recent County Parks News.....

New Director of Sonoma Regional Parks

Sonoma County, CA—In October the Sonoma County Board of Supervisors selected California State Parks Commissioner Caryl Hart as the new Director of Sonoma County Regional Parks. Hart will be succeeding Mary Burns who retired on November 1, 2010. Commissioner Hart is a 20 year Sonoma County resident and a recognized expert in parks acquisition and management.

Since 2000, Ms. Hart has been a Governor's appointee to the California State Parks Commission and has served as Chair of the Commission. In addition, Dr. Hart is a founding member of the local non-profit, LandPaths, is a member of the California Climate reserve Forest Project Protocol Committee, has served the County as a member of the Sonoma County Outdoor Recreation Plan Advisory Committee as well as a member of the County's General Plan Update Citizens Advisory Committee.



Caryl Hart

Hart has also managed a successful production company, 360 Productions for 14 years.

New VA county Director begins

Albemarle County, VA-- Bob Crickenberger is the new Director of Parks and Recreation for Albemarle County following the retirement of Pat Mullaney.

Crickenberger, who has been with the Parks and Recreation Department since 1974 and has served as Deputy Director since 1990, assumed his new position on January 1, 2011. Crickenberger joined the County as a park foreman and served in that capacity until 1981 when he was promoted to Superintendent of Recreation.

Crickenberger has been involved in

numerous community organizations during his employment with the County including serving as a youth baseball and basketball coach and being a member of the Camp Albemarle and Claudius Crozet Park Boards of Directors.

New park unit gets director

Carroll County, GA--We missed reporting in June of 2010 the hiring of a director who will oversee operations of the recently created Carroll County Parks Department.

Trudy Crunkleton, who had served as the club manager of the Sky Valley Resort & Country Club in Rabun County, Ga., has been named the new department's first director.

Crunkleton holds a bachelor's degree in recreation. She began her career at Georgia Power, where she worked as an interpreter and assistant manager. From there, she worked at the Rabun County Parks and Recreation Department in Clayton before serving as the manager of Sky Valley Timeshares from 1992 until 2005 after which she was hired at the country club.

As Director, her initial priority will be to develop the more than 2,000 acres of park land owned by the county that is currently unused. The properties were purchased by the county between 1978 and 2009.

East Bay changes announced

The East Bay Regional Park District Board of Directors announced that Robert E. Doyle was selected to become the new general manager of the Park District effective January 1, 2011. Doyle will replace retiring General Manager Pat O'Brien who served the agency for 22 years.

Prior to joining the East Bay Regional Park District, Mr. O'Brien was General Manager of Southgate Recreation and Park District in Sacramento, California from 1980-1988 managing that District's urban and rural parkland areas in Sacramento County. In addition he served as

Southgate's Superintendent of Recreation from 1974-1980. During his tenure Pat O'Brien has increased the Regional Park District by 30%, doubling the size of 12 parks and increasing the parks from 48 to 65 adding 100 miles of new trails in the process through his abilities to partner with many groups and agencies.



Pat O'Brien



Robert Doyle

Doyle, moves up from his position at East Bay Regional as Assistant General Manager for Interagency and Regional Trail Planning, Land Acquisition and Environmental Review. He has spent 35 years working at the Park District. He began his career as a Park Ranger working in seven Regional Parks, moving to the Planning & Design Department as a Resource Analyst, and then to the Land Acquisition Department as the Trail Specialist, and later Chief of Land and Trail Planning before becoming an Assistant General Manager in 1990.

Doyle is a founding member of Save Mount Diablo, a nonprofit land trust and conservation organization. He was a board member of the Bay Area Open Space Council, and a founding board member of the Bay Area Ridge Trail Council, and was among the first Board of Directors of the Agricultural - Natural Resources Trust of Contra Costa County. He has received industry recognition including a Mountain Star Award from Save Mount Diablo and a Lifetime Achievement Award from California Trails and Greenways.

NACPRO wishes to thank its Corporate Members for their partnership and support

American Civil Constructors.	1601 W. Belleview Avenue	Littleton	CO	80120	www.acconstructors.com
American Swing Products	2533 N Carson St	Carson City	NV	98706	www.americanswing.com
Ameristar Fence Products	PO Box 581000	Tulsa	OK	74158	http://www.ameristarfence.com/
Aquatic Access, Inc.	1921 Production Dr.	Louisville	KY	40299	http://www.aquaticaccess.com/
Beachtech	750 S Rock Blvd.	Reno	NV	89502	www.beachtechusa.com
Biological Mediation Systems.	P.O. Box 650	Ft. Collins	CO	80522	http://biologicalmediation.com/
Brock Enterprises	P.O. Box 185307	Hamden	CT	06518	www.brocknet.com
Connect-A-Dock Inc.	1501 Owner Ave.	Atlantic	IA	50022	www.connectadock.com
Design Concepts	211 N. Public Rd #200	Lafayette	CO	80026	http://www.dcla.net/
Green Play, LLC	3050 Industrial Ln #200	Broomfield	CO	80020	www.greenplayllc.com
M. Putterman & Co, Inc.	4834 S. Oakley	Chicago	IL	60609	mputterman.com
Play & Park Structures	401 Chestnut	Chattanooga	TN	37402	http://www.playandpark.com/
R.J. Thomas Mfg. Co. Inc.	P.O. Box 946	Cherokee	IA	51012	www.pilotrock.com
Rain Drop Products LLC	716 Union Street	Ashland	OH	44850	www.rain-drop.com
RDG Planning & Design	301 Grand Avenue	Des Moines	IA	50309	http://www.rdgusa.com/
Sureloc Landscape Edging	494 E. 64th St.	Holland	MI	49423	http://www.surelocedging.com/
Sof'Solutions Inc.	P.O. Box 667	Draper	UT	84020	www.sof-solutions.com
Sybertech Waste Reduction	13698 Coldicutt Avenue	White Rock	BC	V4B 3A9	http://www.swrl.com/
TrafficGuard Direct LLC	P.O. Box 201	Geneva	IL	60134	http://www.trafficguard.net/
True Pitch, Inc.	P.O. Box 11	Altoona	IA	50009	http://www.pitchingmounds.com/
UCS Inc.	511 Hoffman	Lincolnton	NC	28092	http://ucsspirit.com
Wheeler Lumber LLC	9330 James Ave. S	Bloomington	MN	55431	http://www.wheeler-con.com/

A special *Thank You* to those corporations that have supported the NACPRO Annual Awards Program:





NACPRO

NACPRO News
16 w 284 97th
Burr Ridge, Illinois 60527

The Newsletter of the National Association Of County Park and Recreation Officials
We are on the Web. Visit us at: <http://www.nacpro.org/>

For best reading, download and print this edition in **color**.

Become a NACPRO member
For details log on to:

<http://www.nacpro.org/membership/membership.shtml>

The National Association of County Park and Recreation Officials is an independent non-profit organization with its own chartered constitution and is an affiliate of both the National Association of Counties (NACo) and the National Recreation and Park Association (NRPA). NACPRO represents counties and regional parks systems on federal legislative matters. Membership consists of county park professionals throughout the United States.

Its Goal is to advance official policies that promote county parks and recreation issues while providing members with opportunities to network, exchange resources and achieve professional development.

Apply online for NACo's 2011 Achievement Awards

Applications for the 2011 NACo Achievement Award program are now available.

The annual program is non-competitive and recognizes innovative county government programs. Since it is not competitive, each submission is judged on its own merits based on the criteria outlined in the application information.

Last year, more than 470 programs were recognized from 107 counties in 31 states.

The Achievement Award program provides a way for counties to recognize not only innovative programs, but also the dedicated employees who make these programs successful.

"As the economy continues to flounder, counties are taking innovative steps to provide services and pro-



grams to their residents," said Jacqueline Byers, NACo research director. "Sharing innovation through the Achievement Award program is a way to help other counties with their own problems and also a way to recognize your hard-working employees for their successes."

The application process includes the completion of an online form that requires submitting contact information and the title and category of

the program. Payment by credit card can also be made online, but checks and purchase orders may still be mailed.

The program description and any supplemental materials must still be mailed along with the e-mailed confirmation page. All applications and materials must be postmarked by Feb. 11, 2011.

Since the program's inception in 1970, the achievement awards have honored thousands of county government initiatives that have improved service delivery, achieved greater cost efficiency, provided better customer service, and helped to develop a better-trained work force.

For more information including the 2011 application instructions, please visit www.naco.org/achievementawards.